

COMPANY PRESENTATION



UNCOMPLICATE YOUR WORLD »

SCAN GLOBAL
LOGISTICS

SCAN GLOBAL LOGISTICS AT A GLANCE



Fast growing international freight forwarding company



A company with a defined purpose rooted in meaningfulness for the individual human being



Headquartered in Copenhagen, Denmark



Revenue 2023: 2,022 mEUR



+ 3600 logistics & freight forwarding warriors



Locations: +180 offices in EMEA, Americas, South-East Asia and Pacific

SCAN GLOBAL LOGISTICS

»» ONE NAME

»» ONE TEAM

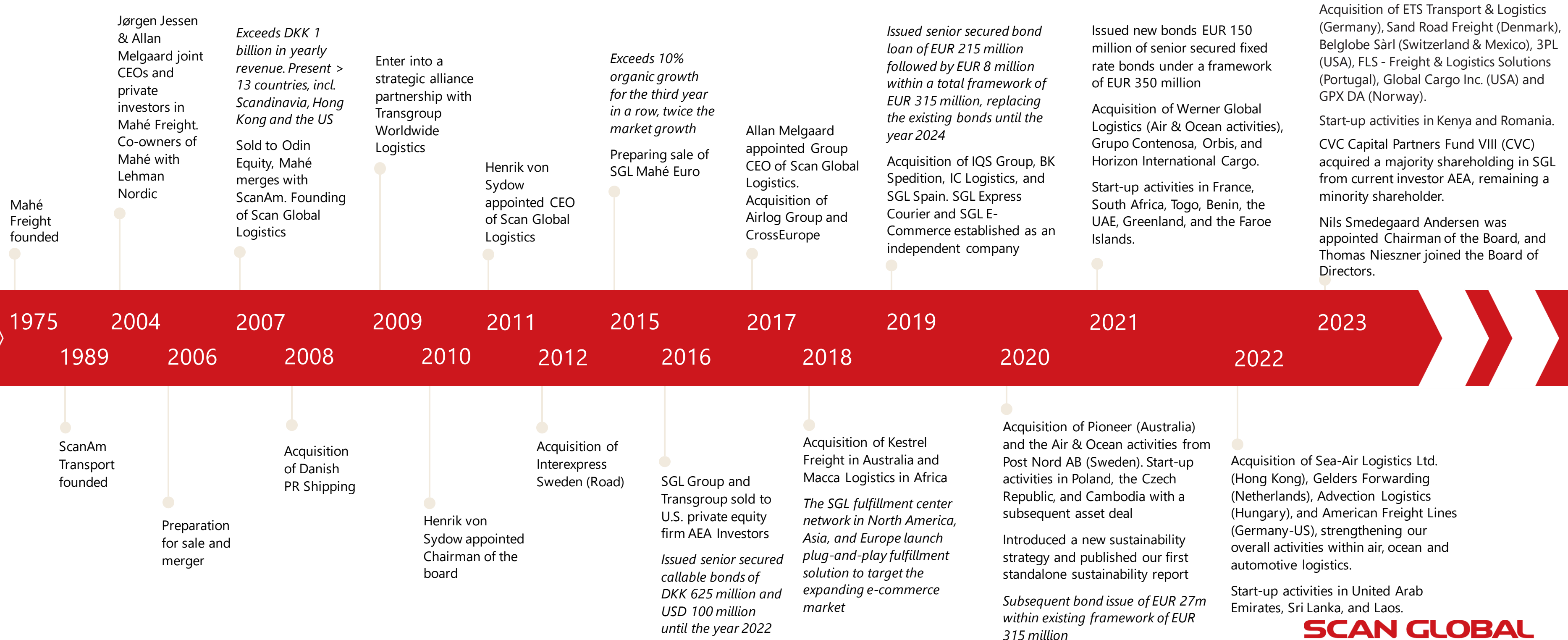
»» ONE IDENTITY

»» ONE CULTURE

»» ONE DREAM

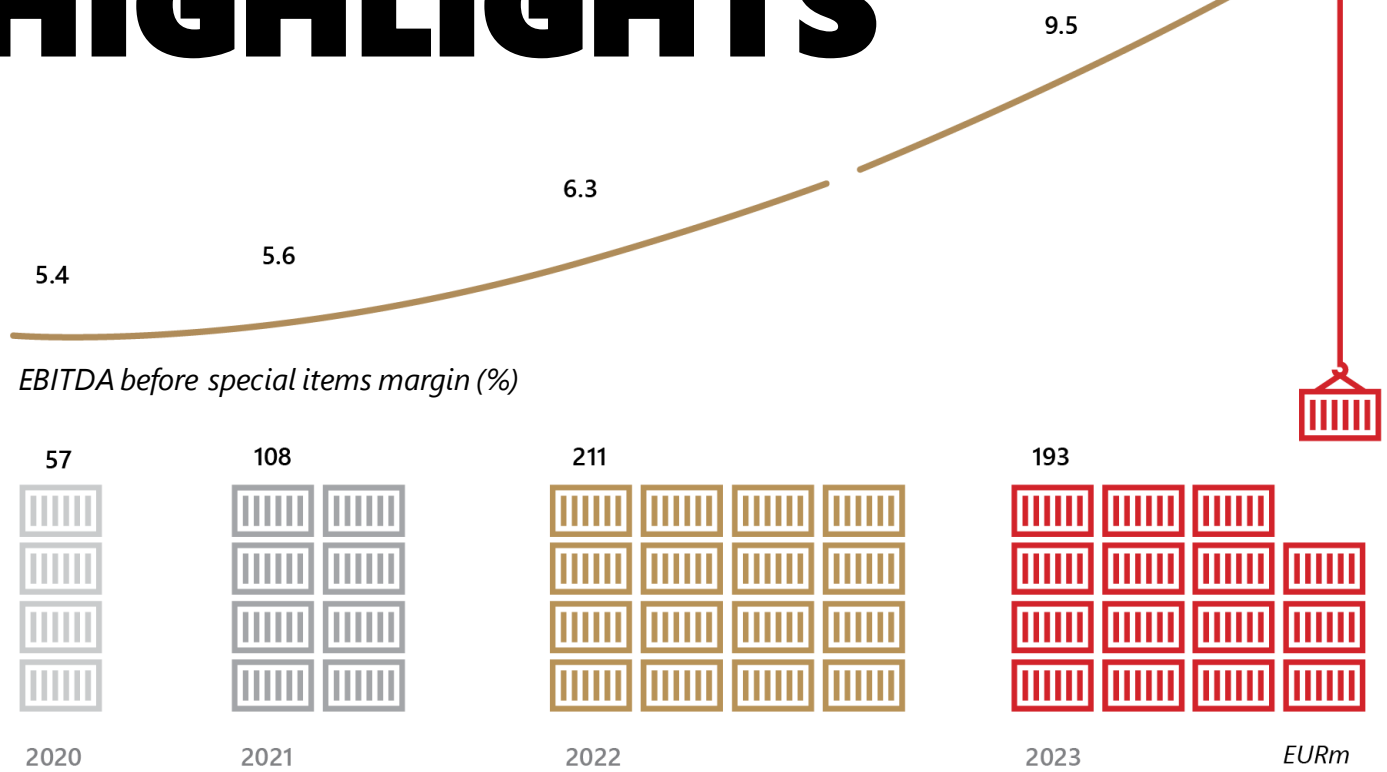
WHO WE ARE

MORE THAN 45 YEARS AND STILL UNCOMPLICATING THE WORLD OF LOGISTICS



HIGHLIGHTS 2023 – SGLT HOLDING

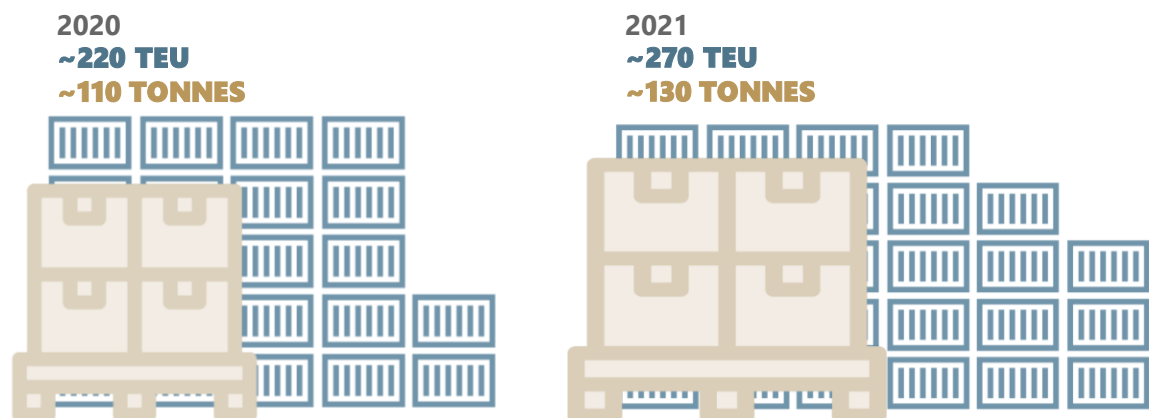
PERFORMANCE HIGHLIGHTS



STEADY VOLUMES

Despite the challenging macro- and geopolitical environment, SGL Group was able to maintain ocean freight volumes on par with 2022 through solid ocean performance. Air freight volume experienced solid growth compared to 2020/2021 and only declined 12% compared to 2022 as there was a significant shift from ocean volumes to air freight volumes due to high ocean freight rates.

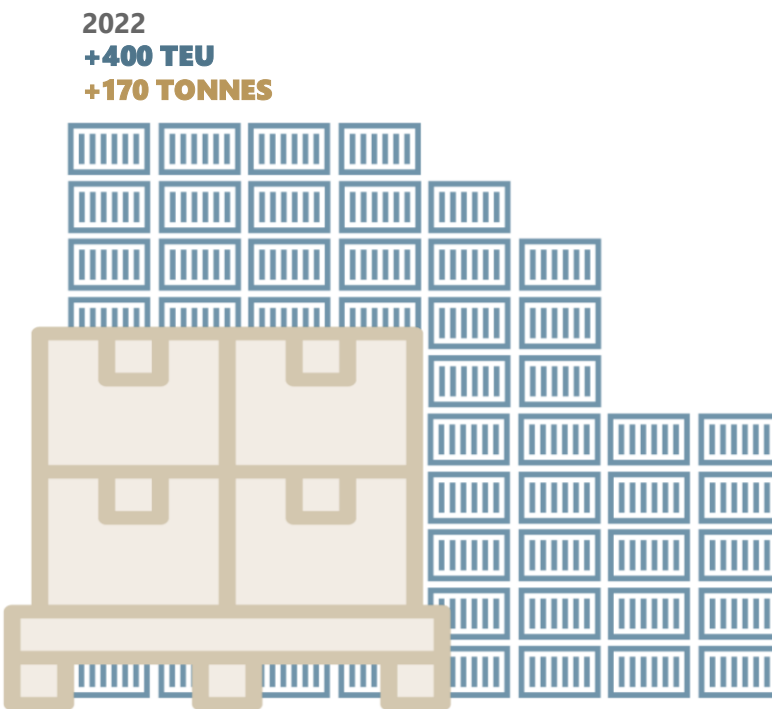
The development in TEU (Twenty-foot Equivalent Unit) and Tonnes shown below are all reflected in thousands.



SOLID EBITDA*

In 2023, SGL Group leveraged on its diverse business model and accomplished an EBITDA* of EUR 193m compared to the all-time high of EUR 211m in 2022.

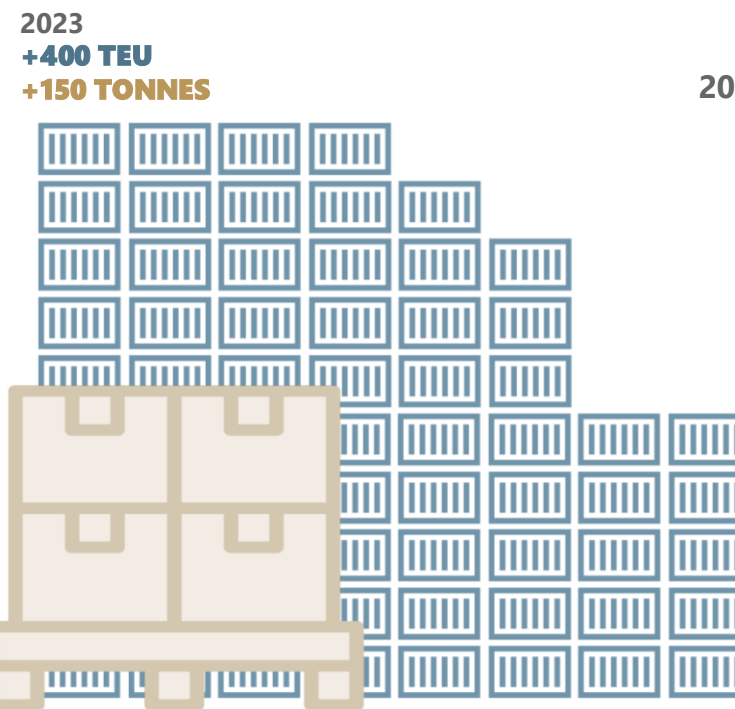
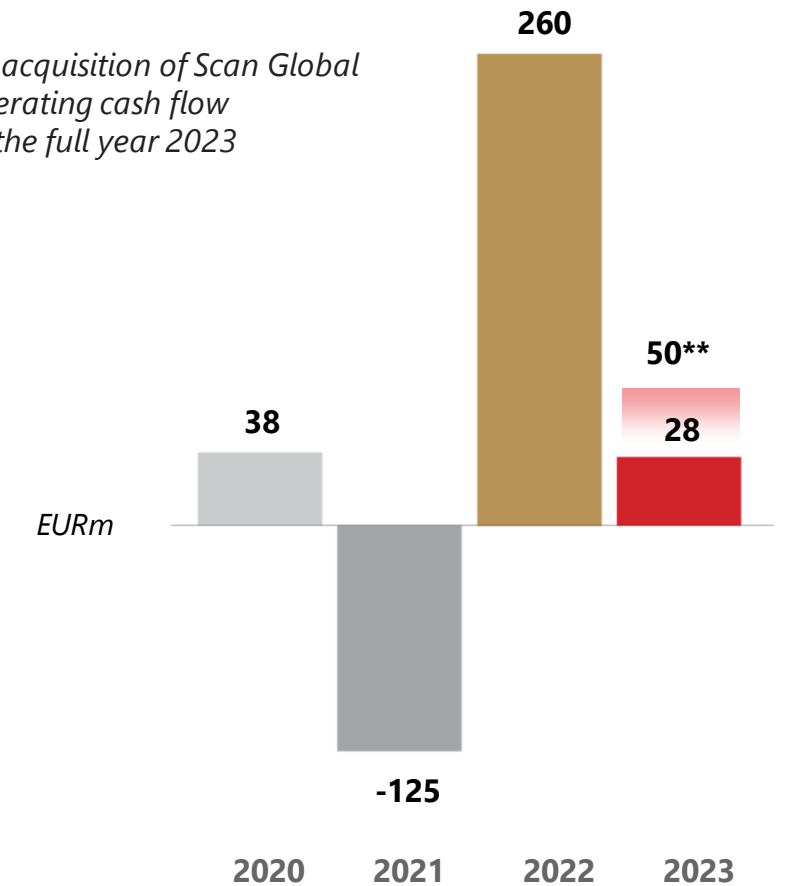
*Before special items



OPERATING CASH FLOW

The operating cash flow amounted to positive EUR 28m in 2023 despite the challenging environment, following the record year 2022. The operating cash flow in 2023 was negatively impacted by the acquisition of the SGL Group, the development in net working capital and effect of increased financing of bonds.

**Excluding costs related to the acquisition of Scan Global Logistics by CVC Funds, the operating cash flow would amount to EUR 50m for the full year 2023



STRATEGIC HIGHLIGHTS



A- RATING

Maintained the A- score in our second year of disclosing to CDP (Carbon Disclosure Project), confirming our position in the 'Leadership' category, which recognises companies for implementing best practices on climate action.

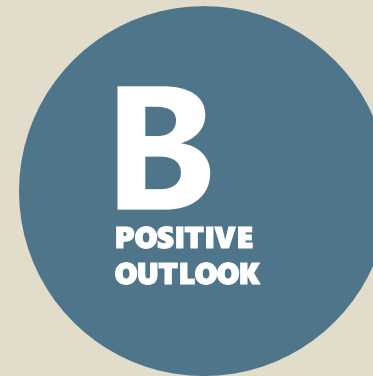
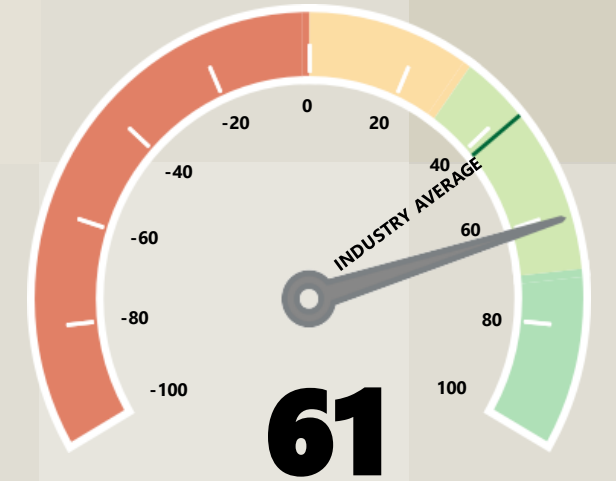


+50 COUNTRIES

SGL continues to progress well on its diverse pipeline of acquisition opportunities and materialised six acquisitions in 2023 (one with closing in 2024), establishing platforms in Switzerland and Portugal, and further strengthening the platforms in Denmark, Germany and the USA. Greenfield activities include geographic expansion to Kenya and Romania. With the combination of acquisitions made and greenfield activities, SGL is now operating in more than 50 countries.

NET PROMOTER SCORE

SGL achieved a best-in-class NPS score of 61 in 2023 compared to both mid-marked peers and largest freight forwarders. This is an improvement from the score of 53 in 2022.



B RATING

S&P has affirmed 'B' rating and **revised outlook to Positive**. Fitch has affirmed 'B' rating with Stable outlook and rated the Bonds 'B+'.

CVC

NEW MAJORITY SHAREHOLDER

In 2023, SGL was able to announce CVC as the new majority shareholder. CVC supports our ambitious growth strategy and we see CVC as the perfect match for SGL professionally and culturally.

NEW CHAIRMAN

In 2023, SGL was pleased to announce the appointment of Nils Smedegaard Andersen as the new Chairman of the Board.

We see Nils Smedegaard Andersen's impressive and deep industry knowledge and capabilities as a great fit helping us to fulfill SGL's ambitious strategy.



CULTURAL DNA

OUR PURPOSE

We exist to make the world
a little less complicated.

CULTURAL DNA

OUR MISSION

We bring a human approach
to everyone, everywhere.



OUR VIRTUES



Respect

We don't believe in entitlement, but that all human beings are equal in worth no matter who they are or what they do



Integrity

We don't only believe in good intentions, but in honesty and execution to have the least possible distance between what we say and what we do



Entrepreneurship

We don't believe in being flawless, but in the ability to combine perseverance with innovation to get things done and learn from our mistakes



Fun

We don't merely believe in protocols, but in fostering an informal atmosphere powered by positive energy for human relationships to prosper



SERVICING YOU FROM +180 OFFICES ACROSS ALL CONTINENTS

GLOBAL PRESENCE

Americas
■ 44 offices

EMEA
■ 68 offices

Nordics
■ 25 offices

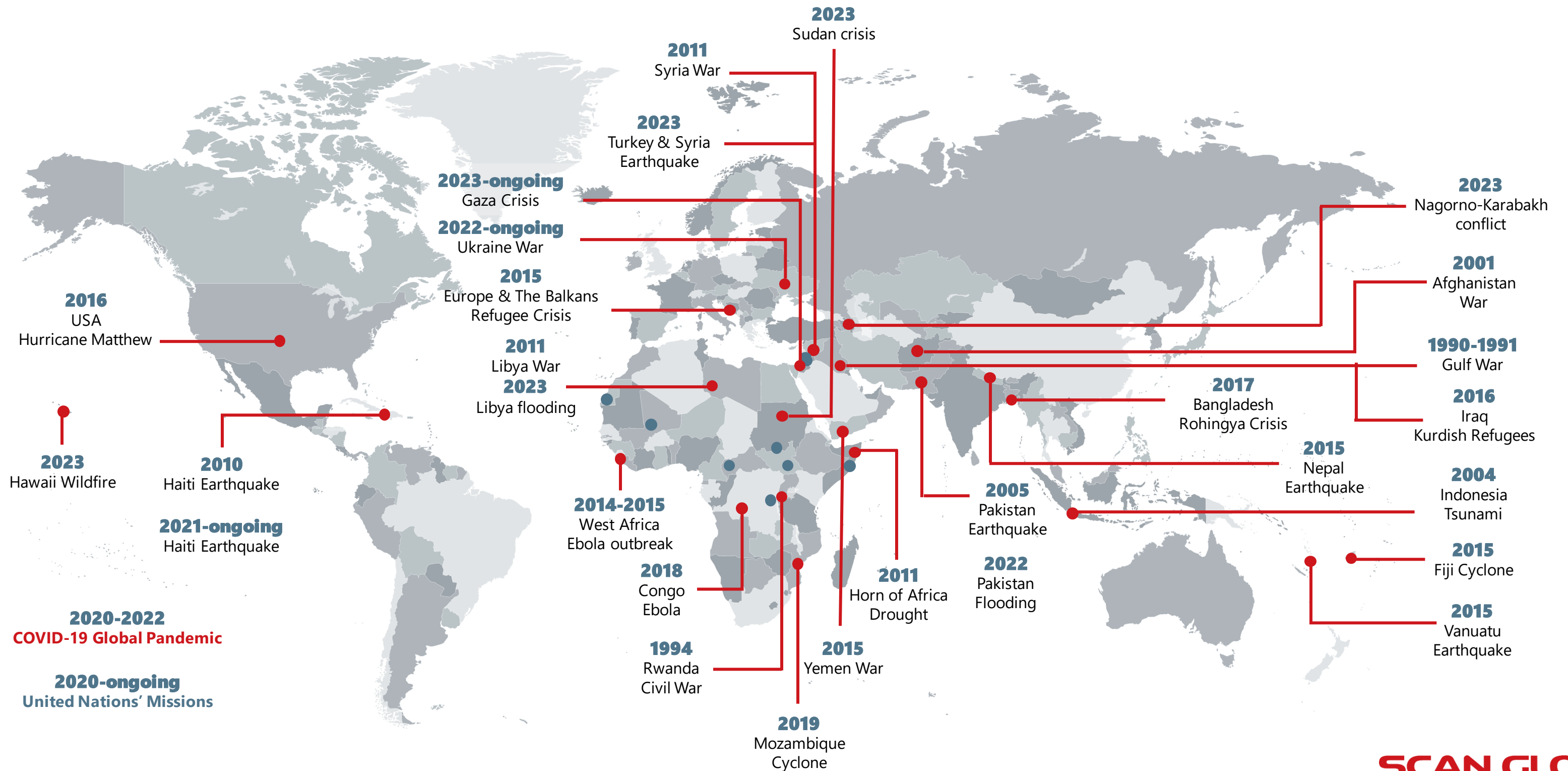
Asia
■ 35 offices

Pacific
■ 9 offices



■ 181 SGL OFFICES
■ 94 STRATEGIC PARTNERS

MORE THAN 45 YEARS OF HUMANITARIAN LOGISTICS AROUND THE WORLD



WHAT WE DO

OUR PRODUCTS

PRODUCT OVERVIEW



AIRFREIGHT



OCEAN FREIGHT



RAIL FREIGHT



ROAD FREIGHT



WAREHOUSING



PARCEL & EXPRESS



PROJECTS & HEAVYLIFTS



FULLFILLMENT & DISTRIBUTION



VALUE ADDED SERVICES



SUSTAINABLE LOGISTICS

SCAN GLOBAL LOGISTICS

WHAT WE DO

OUR INDUSTRIES

HEALTHCARE
AND
MEDICINE

AID



OVERVIEW OF OUR INDUSTRIES



AID & RELIEF



GENERAL
MANUFACTURING



PHARMA
HEALTHCARE



FASHION & RETAIL



FOOD & ADDITIVES



ENERGY



GOVERNMENT &
DEFENSE



TECHNOLOGY



AVIATION &
AEROSPACE



AUTOMOTIVE



MARINE & CRUISE
LOGISTICS



FAIRS & EVENTS



INDUSTRIAL
PROJECTS

OUR DIGITAL PLATFORM

The logo for mySGL, featuring the word 'my' in a grey, lowercase sans-serif font, followed by 'SGL' in a large, bold, red uppercase sans-serif font. The logo is set against a background of two large, light grey, stylized 'S' shapes that create a sense of depth and movement.

In order to give you the best and most efficient service, we have made a portfolio of tools available for you, right at your fingertips.

You can calculate and request a booking, track and trace, receive status notifications and much more. Scan Global Logistics aim to always put you one step ahead. We are innovative and on the cutting edge of development when it comes to advanced added-value systems.

»» **SCAN BIZZ**
Business Intelligence

»» **SCAN VIEW**
Track & Trace

»» **SCAN OMS**
Order Management System

»» **SCAN SHARE**
SGL Partner Portal

»» **SCAN BOOK**
Book Portal

»» **SCAN RATE**
Rate Calculator

»» **SCAN WMS**
Warehouse Management

»» **SGL EXPRESS**
Booking & Tracking of Express

»» **SGL FULFILLMENT
& DISTRIBUTION**
Connection to Global Consumer

CULTURAL DNA

WHY CHOOSE US



We believe we fill a gap in the market leveraging our “perfect size” by full agility supported by a lean structure.



We view your business across products

We deliver same quality and approach across products – no silos!



No P&L sub-optimisation

Executive sponsors and KAM’s are mandated to make End2End P&L decisions to ensure we avoid local sub-optimisation



Fast decision-making

A flat structure enabling efficient decision and escalation handling



Above & beyond

We don’t say no! We provide alternatives and all staff are mandated to take needed decisions



Information Technology

We build IT solutions basis customer feedback and choose robust proven solutions aimed at easing your daily operational



Customised “standard” solutions

We customise Control Tower solutions for our Global Customers

CUSTOMERS

SOME OF OUR CUSTOMERS



CUSTOMER TESTIMONIALS



In our line of business having the right supply chain and logistics partner is pivotal. I am happy to say that with Scan Global Logistics, we have found everything we are aiming for.

Not only are they on time, on target, and price point; they also manage to assist in vital customer support issues.

We can absolutely recommend Scan Global Logistics in all business aspects.

Emil Axelsson, Manager, Logistics & Customer Support
– **Ecolean Group** 



When the Coronavirus started forcing us all to work from home, the SGL team never slowed down. I truly acknowledged the good attitude and positive activities of the SGL team.

The SGL team has shown extraordinary efforts to look for truck resources so that we are able to catch our dispatch plan.

Again, thank you for your teams' great work during this period.

Fiona Yao, Logistics Center Manager, Logistics Center, Jiangyin
– **Alfa Laval** 



Electrolux has had a nearly decade long relationship with Scan Global. SGL has proved to be a reliable and preferred service provider due to their solid key account management support, active involvement and critical factor impacting our flows and good operational delivery.

SGL makes realistic commitment and delivers well on the agreed KPI's.

Tia Mohan, Director – Global Premium Freight Purchasing
– **Electrolux** 

OUR TARGETS, MAIN PARTNERSHIP AND SUSTAINABILITY RATINGS



APPROVED CLIMATE TARGETS BY THE SCIENCE BASED TARGET INITIATIVE

- » Our targets are aligned with the scenario of limiting global warming to 1.5°C

1.5°C Supply Chain Leaders

Driving climate action throughout global supply chains



MEMBER OF THE EXPONENTIAL ROADMAP INITIATIVE

- » Member of the subgroup **1.5°C Supply Chain Leaders**
- » Committed to cut CO2 emissions from transportation among members and business partners by 50-100% within a decade



DISCLOSURE INSIGHT ACTION



SUSTAINABILITY RATINGS AND DISCLOSURE

- » CDP – maintained 'A-' rating in 2023, recognised in the leadership band for implementing current best practices
- » EcoVadis – Received a Sustainability score of 56



OUR UN SUSTAINABLE DEVELOPMENT GOALS

We aim to realise **two UN Sustainable Development Goals**. These global goals are part of our core business and where we can impact the most.



13. CLIMATE ACTION
Key ambition to reduce CO2e emissions for SGL and help our customers reduce their transport emissions, anchored in our science-based target and Low Carbon Logistics solutions catalogue.



17. PARTNERSHIPS
Drive the zero-carbon journey together with like-minded companies. Support humanitarian agencies, along with governments to provide aid & relief logistics services and distribute vaccines globally.



TANGIBLE SERVICES TO REDUCE YOUR CO2 EMISSIONS – FROM REPORTING TO ACTIONS

Low-Carbon Logistics services



CO2 Emissions Report

We create transparency for our customers to see where emissions lie

- ✓ **CO₂ Visibility**
(Option to include non-SGL Logistics Providers)



Low Emissions Transport

We offer close to zero emitting solutions for different transport modes

- ✓ **E-trucking**
- ✓ **Sustainable Aviation Fuel (SAF)**
- ✓ **Biofuel for Ocean Freight**



CO2 Reduction Concept

We assess current supply chains, identify reduction opportunities and implement

- ✓ **End-to-end reduction concept**
- ✓ **Investing in CO₂ projects**



CO2 Reduction Partnerships

We offer climate partnerships to reduce CO₂ emissions every year

- ✓ **Strategic CO₂ reduction partnerships**



Sustainable Expert Advisory

We offer industry expert knowledge and external sustainability advice

FIND FURTHER INFORMATION IN OUR 2023 ANNUAL REPORT & 2023 SUSTAINABILITY REPORT



[Read our Annual Report 2023](#)



[Read our Sustainability Report 2023](#)

UNCOMPLICATE YOUR WORLD »»



www.scangl.com